

Double-sided LED screen

[Brochure](#)



Double-sided display



High brightness



Light weight



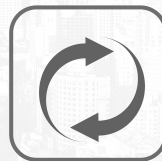
Front access



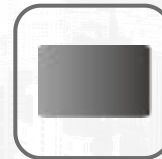
Quick installation



Wide viewing angle

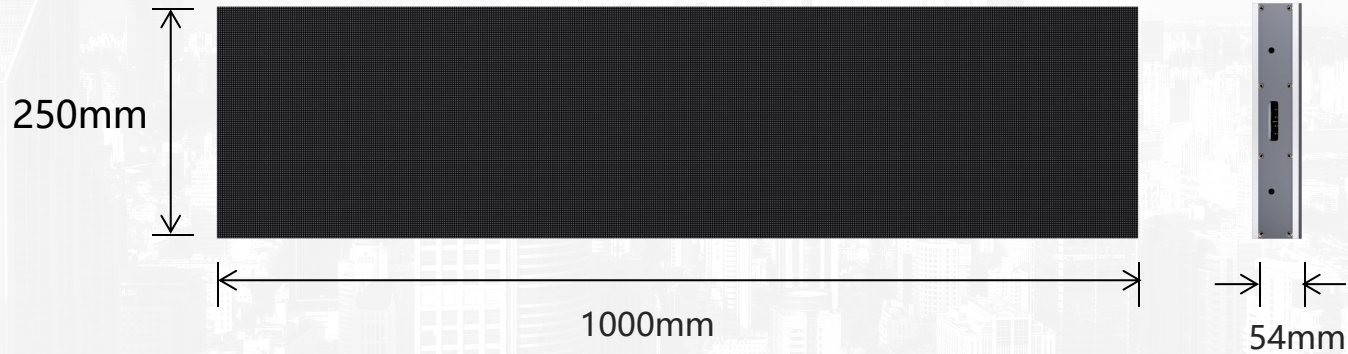


High refresh rate



High grayscale

Dimension



Weight 7kg



Double side display

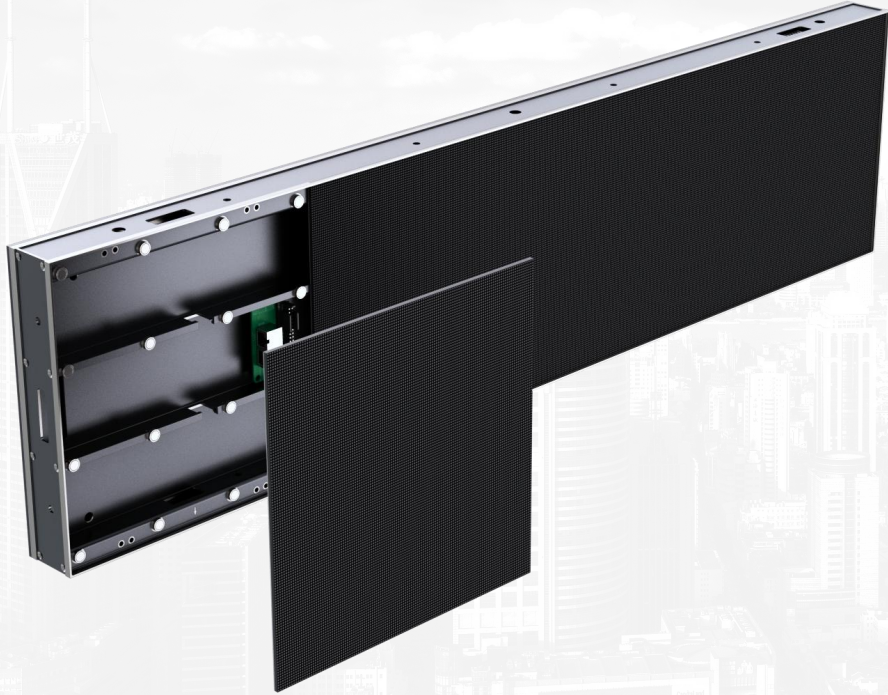
Supports dual sided co display/co display
360 ° all-round display, each side is exciting



A-side



B-side

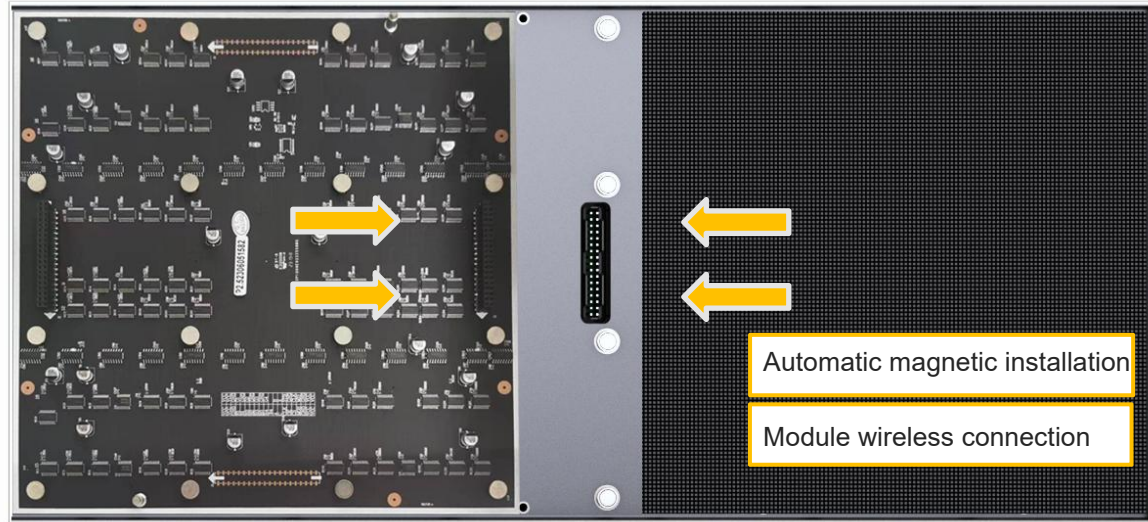


Full front maintenance

Full front maintenance, simple structure and easy installation

Hot swapping · wireless connection

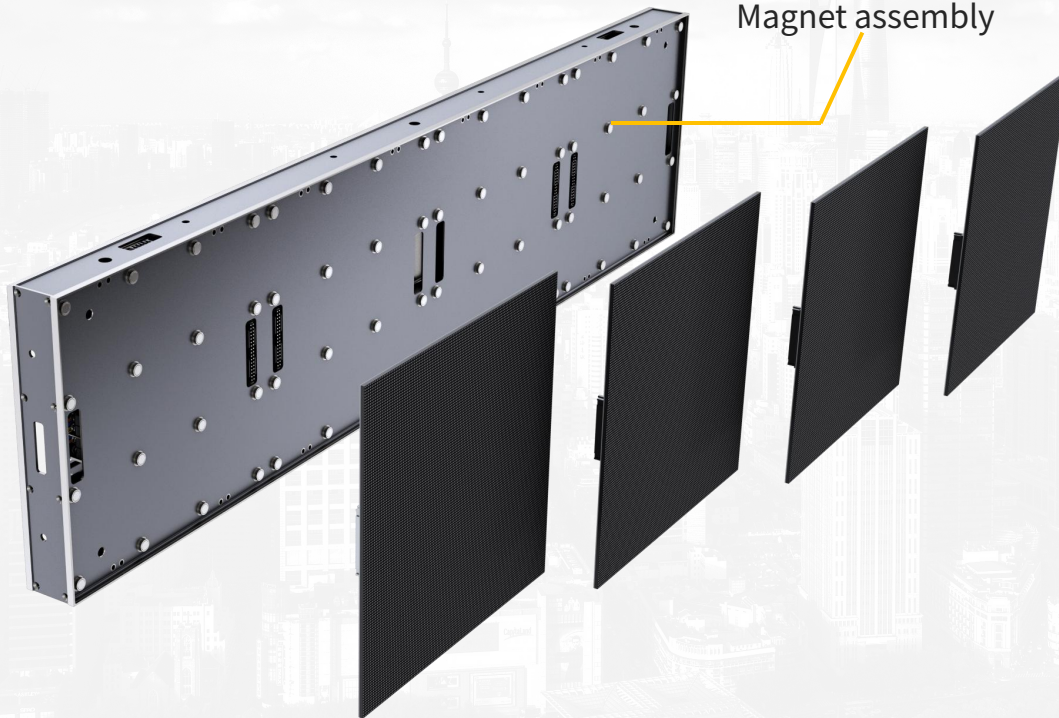
- The hard connection design between the module and the box, completely eliminates the constraints of wires;
- 5V line design with extremely low failure rate;
- All aluminum box, fast heat dissipation;

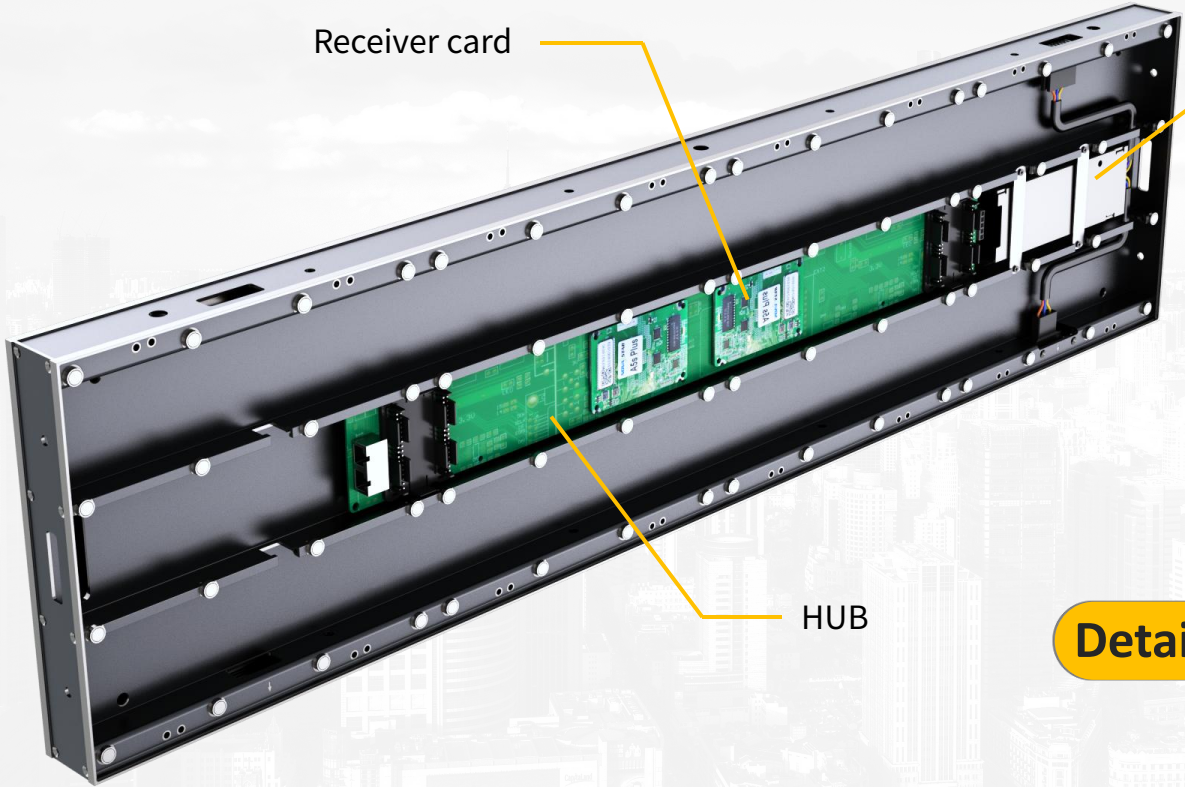


Module

Cabinet

- Modules and cabinet are adsorbed by multiple magnetic columns, which is firm





Receiver card

Power supply

HUB

Details of cabinet

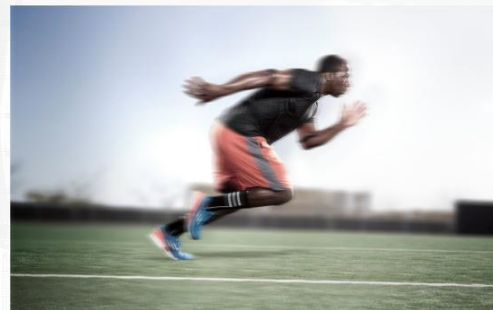
160° Super wide viewing angle



High refresh rate

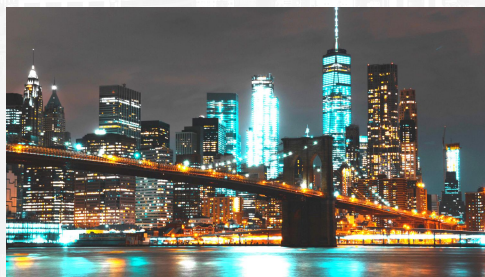


High refresh rate

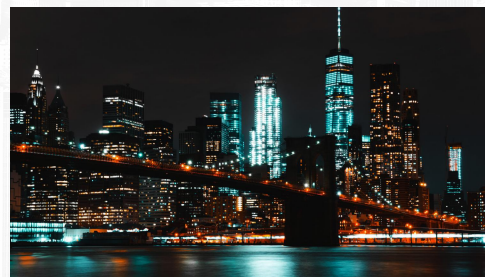


Low refresh rate

High grey scale



Hig grey scale



Low grey scale

Cabinets seamless splicing to make 2K, 4K, 8 and 16 K
ultra high definition LED screen

16K

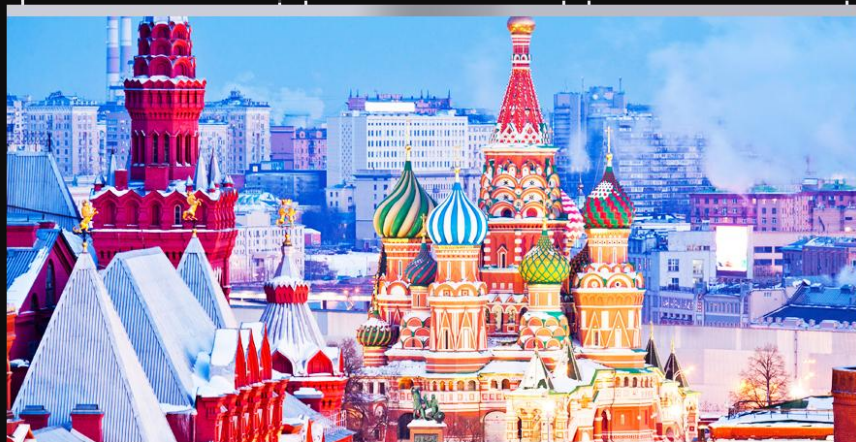


8K

4K

2K

Installation mode



Hanging

Pixel Pitch	P1.25	P1.5625	P1.95	P2.5	P2.604	P2.976	P3.91
LED Type	SMD1010(GOB)	SMD1212(GOB)	SMD1515	SMD1515	SMD1515	SMD1515	SMD1515
Physical density(Dot/sqm)	640000	409600	262144	160000	147456	112896	65536
Module resolution	200X200	160X160	128X128	100X100	96X96	84X84	64X64
Module dimension(mm)	250X250	250X250	250X250	250X250	250X250	250X250	250X250
Panel size(mm)	1000×250×54	1000×250×54	1000×250×54	1000×250×54	1000×250×54	1000×250×54	1000×250×54
	750×250×54	750×250×54	750×250×54	750×250×54	750×250×54	750×250×54	750×250×54
	500×250×54	500×250×54	500×250×54	500×250×54	500×250×54	500×250×54	500×250×54
Module quantity(WXH)	4X1/3X1/2X1	4X1/3X1/2X1	4X1/3X1/2X1	4X1/3X1/2X1	4X1/3X1/2X1	4X1/3X1/2X1	4X1/3X1/2X1
Panel resolution	800×200	640×160	512×128	400×100	384×96	336×84	256×64
	600X200	480×160	384×128	300×100	288×96	252×84	192×64
	400×200	320X160	256×128	200×100	192×96	168×84	128×64
Maintenance	Front access	Front access	Front access	Front access	Front access	Front access	Front access
Cabinet material	Aluminum	Aluminum	Aluminum	Aluminum	Aluminum	Aluminum	Aluminum
Single point brightness correction	Have	Have	Have	Have	Have	Have	Have
Brightness(Nits)	600	600	800	800	800	800	1000
Color temperature(K)	3200-9300 Optional	3200-9300 Optional	3200-9300 Optional	3200-9300 Optional	3200-9300 Optional	3200-9300 Optional	3200-9300 Optional
Viewing angle(V/H)	160°/160°	160°/160°	160°/160°	160°/160°	160°/160°	160°/160°	160°/160°
Brightness/Color uniformity	≥97%	≥97%	≥97%	≥97%	≥97%	≥97%	≥97%
Contrast	10000 : 1	10000 : 1	10000 : 1	10000 : 1	10000 : 1	10000 : 1	10000 : 1
Frame frequency	50/60	50/60	50/60	50/60	50/60	50/60	50/60
Drive mode	1/50 scan	1/40 scan	1/32 scan	1/25 scan	1/32 scan	1/28 scan	1/16 scan
Gray level	14/16 Optional	14/16 Optional	14/16可选	14/16 Optional	14/16 Optional	14/16 Optional	14/16 Optional
Refresh rate(Hz)	3840	3840	3840	3840	3840	3840	3840
Max. power consumption(W/sqm)	650	650	650	650	650	650	650
Avg. power consumption(W/sqm)	100-200	100-200	100-200	100-200	100-200	100-200	100-200
Protection level	IP31	IP31	IP31	IP31	IP31	IP31	IP31
Power input	AC90-264V,47-63Hz						
Wroking temperature/humidity(°C/RH)	-20~60°C/10%~85%						
Storage temperature/humidity(°C/RH)	-20~60°C/10%~85%						
Cert.	CCC/CE/RoHS/FCC/CB/TUV/IEC						

Case gallery





THANKS