



Indoor LED Rental Screen

R Series

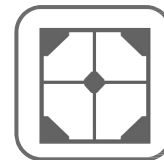
Juhui Vision



Arc-shape Adjustable



Front/rear Maintenance



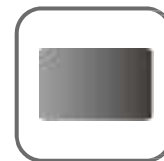
High-precision Structure



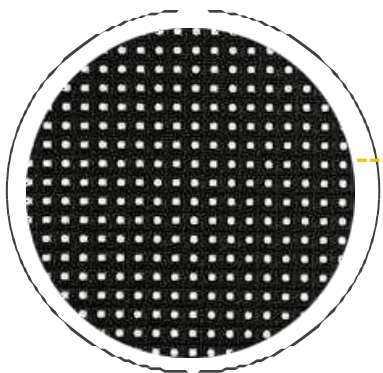
Quick Installation



Wide Viewing-angle

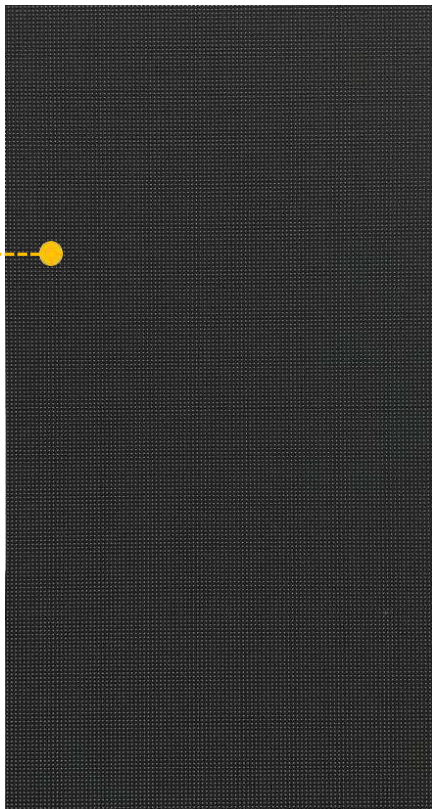


High Contrast Ratio



Front Viewing

Mask with special grain pattern
processing for promoting contrast ratio





Cabinet back

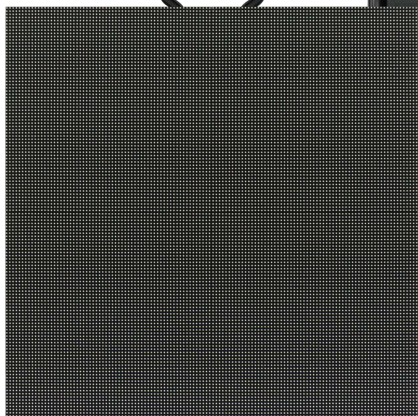
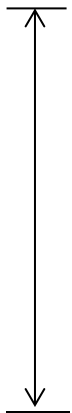
Light-weight, save transportation and installation cost.

Multi-handles, make installation easier.

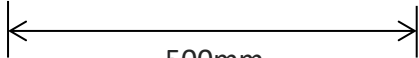
Corner protection, protects LED in safe.



500mm



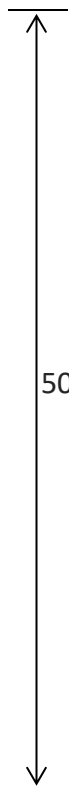
500mm



500mm



500mm



Dimension



84.5mm



84.5mm





500X500 8kg

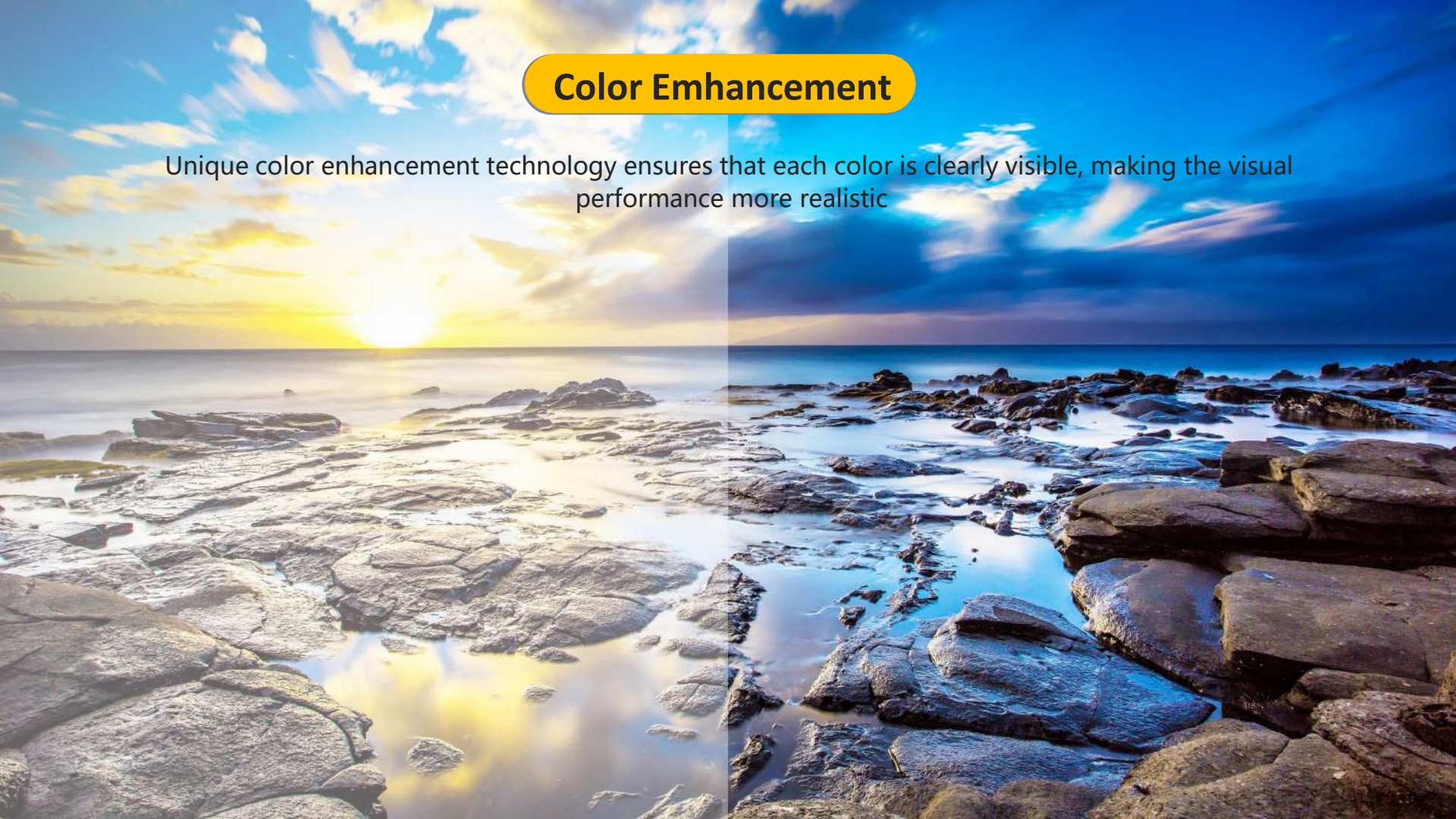
Lighter & Thinner



500X500 14.5kg

Color Enhancement

Unique color enhancement technology ensures that each color is clearly visible, making the visual performance more realistic



High refresh rate



High refresh rate



Low refresh rate

High grey scale



Hig grey scale



Low grey scale

Seamless Splicing

Die-casting Aluminum Cabinet structure with
CNC high-precision processing

(Flatness of Cabinet $\leq 0.1\text{mm}$)

HUB connection with high-integrated power
box

Plug&play, hot-swapping

Both front/rear side maintenance

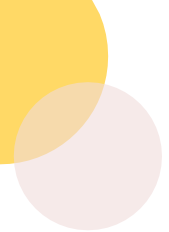
Buckle locks make the power box assembling&disassembling
easier



160° Super wide viewing angle

Perfect presentation of images from any angle





Temperature

Voltage

Total Time

Working time



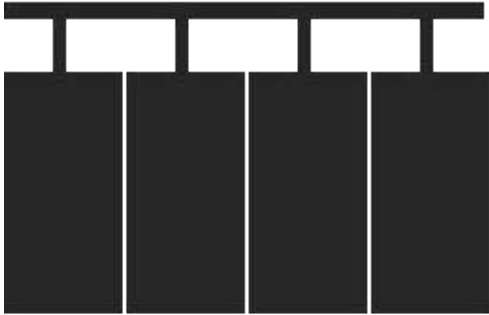
Smart Monitoring LCD panel

Information system management platform



Variability Installation

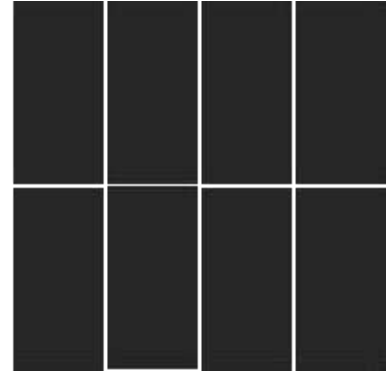
As professional LED rental products, convenience and variability of installations are one of the key points for your rental businesses. It can be assembled in most of standardized sizes with various installation ways, such as hanging installation, arc installation, stacking installation, etc.



Hanging

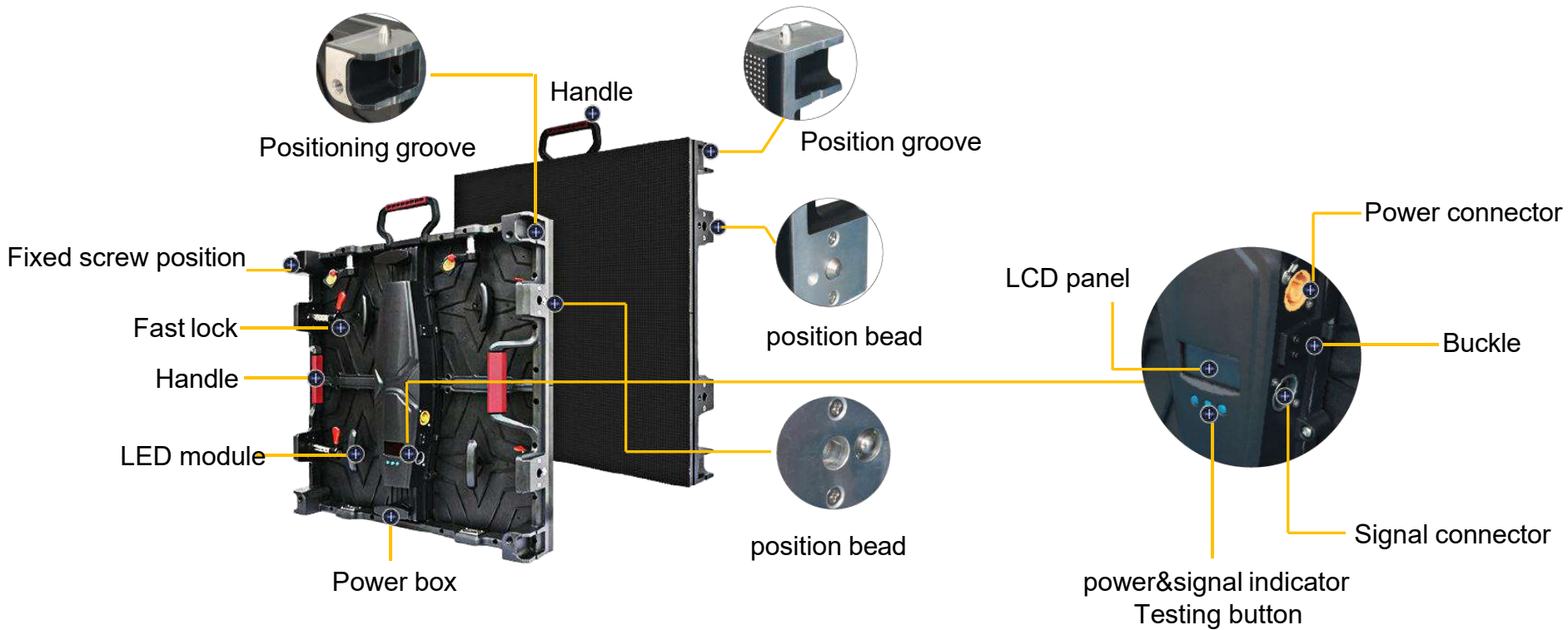


Arc-shapes



Stacking

Cabinet Structure



Pixel Pitch

P1.5625

P1.95

P2.5

P2.604

P2.976

P3.91

LED Type	SMD1212(GOB)	SMD1515	SMD1515	SMD1515	SMD1515	SMD2020
Physical density(Dot/sqm)	409600	262144	160000	147456	112896	65536
Module resolution	160X160	128X128	100X100	96X96	84X84	64X64
Module size(mm)	250X250	250X250	250X250	250X250	250X250	250X250
Cabinet size(mm)	500X500X84.5	500X500X84.5	500X500X84.5	500X500X84.5	500X500(1000)X84.5	500X500(1000)X84.5
Cabinet resolution	320X320	256X256	192X192	192X192	168X168/168X336	128X128/128X256
Module QTY(WXH)	2X2	2X2	2X2	2X2	2X2/2X4	2X2/2X4
Cabinet weight(kg)	8	8	8	8	8/14.5	8/14.5
Maintenance	Front/rear	Front/rear	Front/rear	Front/rear	Front/rear	Front/rear
Cabinet material	Die-casting Aluminum	Die-casting Aluminum	Die-casting Aluminum	Die-casting Aluminum	Die-casting Aluminum	Die-casting Aluminum
Brightness(Nits)	≥600	≥800	≥800	≥800	≥800	≥1000
Color temperature(K)	1000-18500 adjustable	1000-18500 adjustable	1000-18500 adjustable	1000-18500 adjustable	1000-18500 adjustable	1000-18500 adjustable
Viewing angle(V/H)	160°/160°	160°/160°	160°/160°	160°/160°	160°/160°	160°/160°
Viewing distance	2-50m	2-50m	3-50m	3-50m	3-100m	4-100m
Contrast ratio	10000 : 1	10000 : 1	10000 : 1	10000 : 1	10000 : 1	10000 : 1
Frame frequency	50/60	50/60	50/60	50/60	50/60	50/60
Drive mode	1/40 Scan	1/32 Scan	1/25 Scan	1/32 Scan	1/28 Scan	1/16Scan
Grey level	16bit	16bit	16bit	16bit	16bit	16bit
Refresh rate(Hz)	3840	3840	3840	3840	3840	3840
Max. power consumption(W/sqm)	600	600	600	600	600	600
Avg. power consumption(W/sqm)	200-300	200-300	200-300	200-300	200-300	200-300
Protection level	IP31	IP31	IP31	IP31	IP31	IP31
Power input			AC90-264V,47-63Hz			
Working temperature/humidity(°C/RH)	-20~60°C/10%~85%					
Storage temperature/humidity(°C/RH)	-20~60°C/10%~85%					

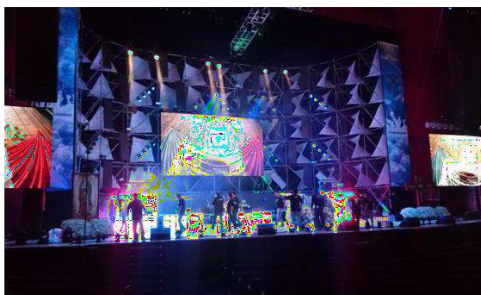
Certification

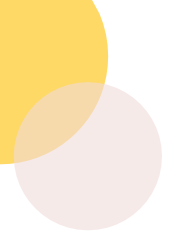
CCC/CE/RoHS/FCC/CB/TUV/IEC

Applications



Applications





THANKS